

**POWERPOINT SLIDES | PRESENTATIONS**

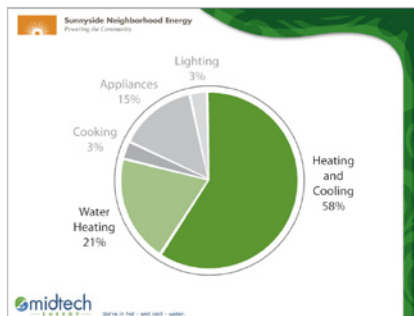
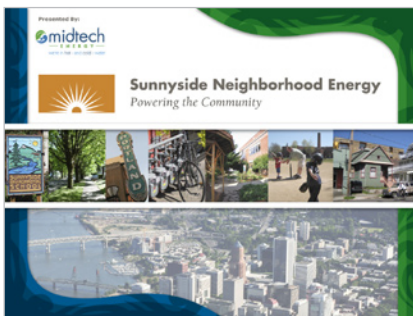


**Client:** Qualcomm, inc  
**Project:** Various marketing templates  
**Role:** Design & animation; worked within marketing



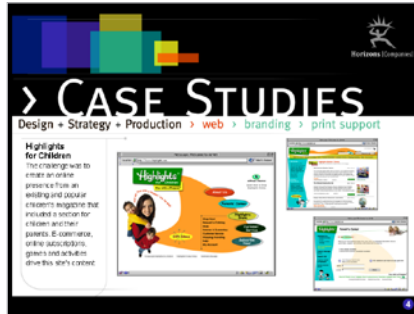
CMPC Hardware Specification				
First Generation	Stadium Focused Design	Protective cover and handle: Drop to carry	Small form factor	Drop-test: 60 cm
	Youth Friendly ID	Protective cover and handle: Easy to carry	Light weight: 1.25 kg*	Small form factor
	Rugged	Water resistant keyboard	Dust resistant: ISO 194	Drop-test: 80cm
Second Generation	Low Cost Storage	Qualified MLC flash	MLC is 40% cost of same sized SLC flash	
	Atom Processor	Intel Atom Processor: N270 at 1.66GHz	Intel Wireless Display	1.5x system performance ~30% longer battery life
	Higher Resolution	8.5" LCD	1024 x 600 resolution support	
Hawk Peak	Next-Gen SSD	Qualified MLC flash storage support	Cost effective	Three-year lifespan

**Client:** Intel  
**Project:** Merge 4 powerpoints into one with image research and flow chart designs  
**Role:** Design & animation; worked with agency

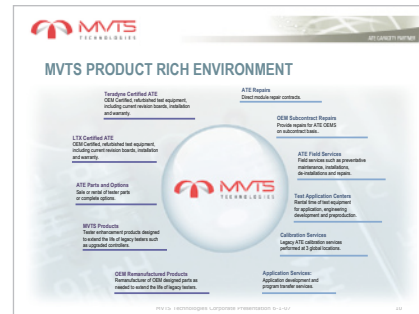
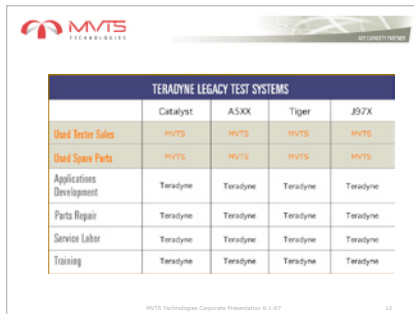
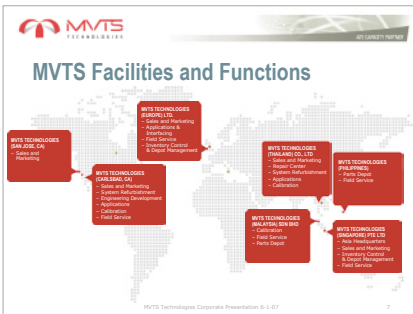


**Client:** MidTech Energy  
**Project:** Presentation to highlight the Sunnyside Neighborhood Energy program  
**Role:** Design & production; worked with client

**POWERPOINT SLIDES | PRESENTATIONS**



*Client:* Horizons Companies  
*Project:* Promotional powerpoint for a CD-ROM and Web Design studio  
*Role:* Design & animation; worked within studio



*Client:* MVTs Technologies  
*Project:* Powerpoint design for a full-service provider of refurbished Automatic Test Equipment (ATE) to the semiconductor industry  
*Role:* Design & animation; worked with client



*Client:* Led Lenser  
*Project:* Powerpoint to highlight how Lenser lighting products offer incredible light output with LED technology  
*Role:* Design & production; worked with agency